

MONTHLY MEMBERSHIP PROGRESS REPORT

LOCATION UGANDA

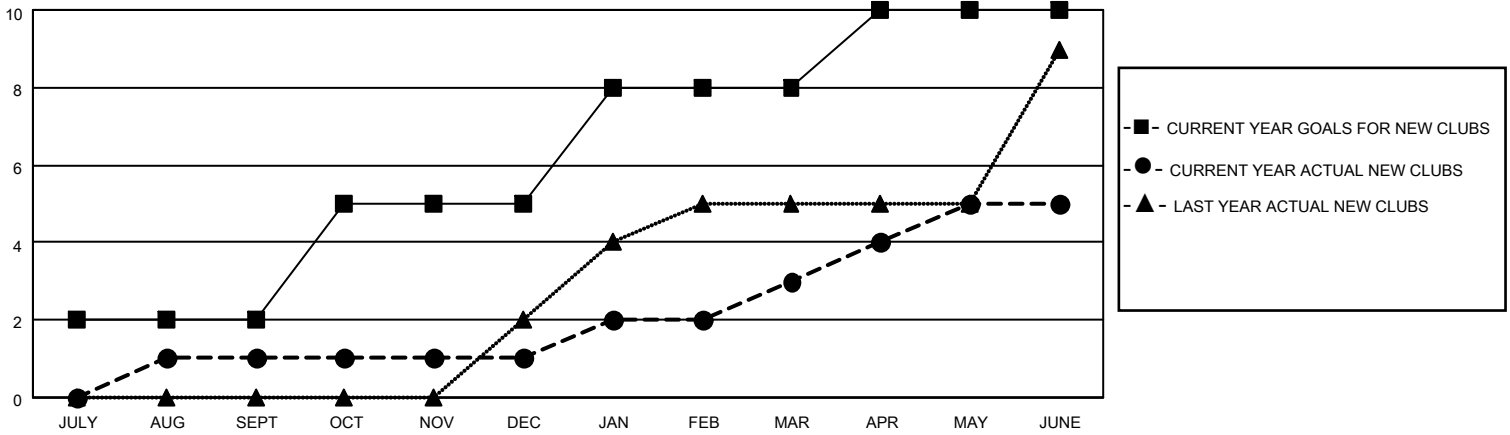
District 411 B

Results as of: 6/30/2023

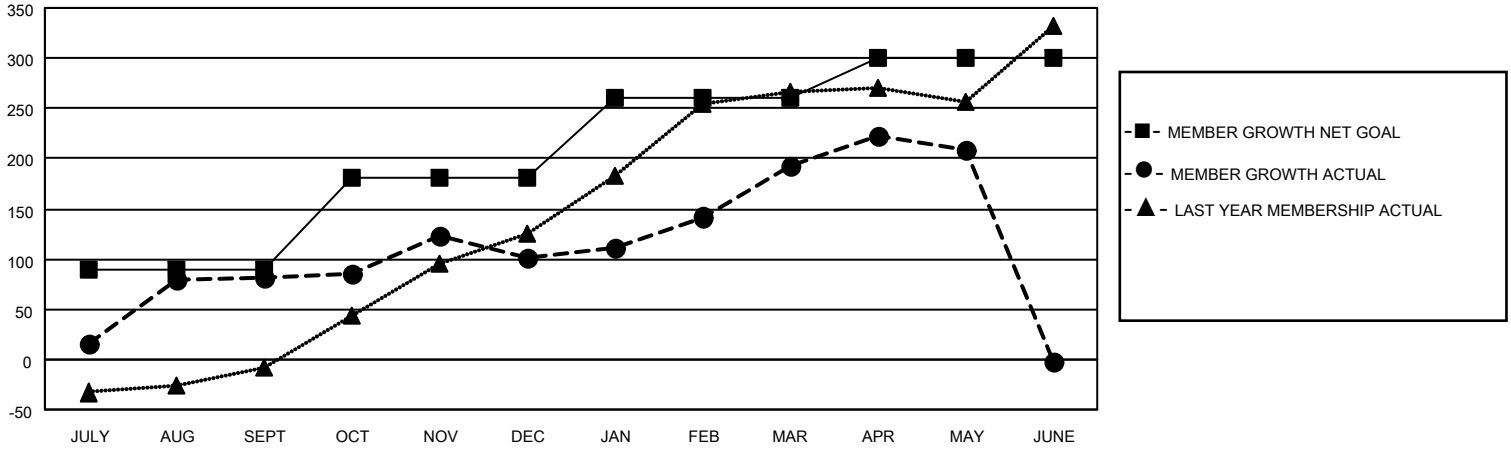
Clubs			
RESULTS FOR 2022-2023			
QUARTER	NEW CLUB GOAL	NEW CLUBS	DROPPED CLUBS
JULY/AUG/SEPT	2	1	0
OCT/NOV/DEC	3	0	2
JAN/FEB/MAR	3	2	2
APR/MAY/JUNE	2	2	7

Members			
RESULTS FOR 2022-2023			
QUARTER	MEMBER GROWTH NET GOAL	MEMBER GROWTH ACTUAL	DROPPED MEMBERS ACTUAL (including transfers)
JULY/AUG/SEPT	90	129	46
OCT/NOV/DEC	90	149	125
JAN/FEB/MAR	80	166	69
APR/MAY/JUNE	40	154	337

GOALS AND ACTUAL NEW CLUBS CUMULATIVE



GOALS AND ACTUAL MEMBERS CUMULATIVE



DROPPED CLUBS: 11

50 CLUBS OF 61 ADDED 1 OR MORE NEW MEMBERS

GENDER DISTRIBUTION

DROPPED MEMBERS

DECEASED	5
CLUB CANCELLED	201
OTHER	371
TOTAL	577

MALE	1,103 (60.08%)
FEMALE	732 (39.87%)
NON BINARY	0 (0.00%)
PREFER NOT TO ANSWER	1 (0.05%)

[CLICK HERE FOR CUMULATIVE MEMBERSHIP DATA](#)

TOTAL FAMILY UNIT MEMBERS	741
FAMILY MEMBERS PAYING HALF DUES	488